



## USER MANUAL

# JETPRO 120

Ref. 30685



**EUROPE PROJECTION** - Z.I. Rousset Parc Club - 343, avenue Francis Perrin - 13106 Rousset sur Arc Cedex  
Tél : 00 33 (0)4 42 29 08 96 – Fax : 00 33 (0)4 42 53 44 36  
SAS au capital de 400 000€ - SIREN 394 961 510 – NAF 2892 Z

Edition of 18/04/2017



# SUMMARY

<b>1. INTRODUCTION</b>	p. 4
<b>2. USER MANUAL</b>	p. 5
2.1. Importance of the manual	p. 5
2.2. Receivers of the manual	p. 5
<b>3. WARNING</b>	p. 6
3.1. Safety	p. 6
3.2. Electric connection	p. 8
3.3. End-of-life of the product	p. 8
<b>4. YOUR MACHINE</b>	p. 9
4.1. Description	p. 9
4.2. Technical characteristics	p. 9
4.3. Identification of the components of the machine	p.10
<b>5. USE OF THE MACHINE</b>	p.12
5.1. Prerequisites	p.12
5.2. Starting up	p.12
5.3. Error codes	p.13
<b>6. MAINTENANCE</b>	p.14
6.1. Cleaning procedure	p.14
6.2. Dismantling	p.15
6.3. Reassembly	p.17
<b>7. FAILURES AND REMEDIES</b>	p.19
<b>8. MACHINE DECLARATION OF CONFORMITY</b>	p.20
<b>9. SPRAY-GUN DECLARATION OF CONFORMITY</b>	p.21
<b>10. WARRANTY</b>	p.22
10.1. Warranty conditions	p.22
10.2. Warranty certificate	p.23

# 1. INTRODUCTION

---

You just acquired a **JETPRO 120 atomizer** and all the team of Europe Projection thanks you for the confidence you have granted us.

Manufacturer of professional equipments for paint and fillers, we have put our know-how for 20 years at the service of the users of our machines.

Our technical and commercial team is at your disposal for any further information you may need about the machine you just acquired.

## **EUROPE PROJECTION**

Z .I. Rousset Parc Club - 343, avenue Francis Perrin - 13106 Rousset sur Arc Cedex

Tél : 00 33 (0)4 42 29 08 96 – Fax : 00 33 (0)4 42 53 44 36

SAS au capital de 400 000€ - SIREN 394 961 510 – NAF 2892 Z



## 2. USER MANUAL

---

### 2.1. IMPORTANCE OF THE MANUAL

This manual is a key part for the use of your machine. It summarizes the procedures of starting-up, cleaning and maintenance of the device and also the safety instructions you need to observe.

Read carefully all the working and safety instructions and the warnings included in this manual before starting your machine.

Most of the accidents are caused by the non-compliance of the safety standards and rules.

This manual must be kept near the machine, within reach of the user and held in good condition until the final destruction of the machine.

In case of loss or deterioration of the manual, you can ask the machine manufacturer mentioned on page 4 for a copy at any moment.

### 2.2. RECEIVERS OF THE MANUAL

This manual is intended to any staff which will manipulate the machine :

- people in charge of the transport of the machine
- people in charge of the use of the machine
- people in charge of the cleaning and maintenance of the machine
- people in charge of the final destruction of the machine

## 3. WARNING

### 3.1. SAFETY

**Using the machine in an incorrect way or in non-compliance of the safety instructions indicated in this manual can cause death or serious injuries.**

**Read carefully all the working and safety instructions and the warnings contained in this manual before starting your machine.**



- Respect all the safety standards before running the equipment.
- Use the equipment only for the applications specified in the manual.
- Always remain alert when using the equipment.
- Transport the machine using the handles or the appropriate grips.
- During the breaks, disconnect electrically the machine.



- Run the equipment to its nominal voltage.
- Let at least 50 cm of free space between the equipment and any obstacle so that the air flow is not blocked.
- Know how to quickly stop the equipment in case of necessity.
- Never use the equipment while it is running abnormally or it is defective.
- Do not direct a water jet or flammable liquid on the machine.
- Never direct an air jet or product jet on a person or an animal.
- Do not touch warm surfaces of the equipment.
- Always wear adequate body protections (glasses, gloves, overall and mask) and pay attention to long hair.
- Never touch moving parts.
- Do not insert any object or the hands inside the protection grids to avoid any accident or damage to the machine.
- For any outside job, only use appropriate extension cords.



- Maintain the equipment carefully and clean it properly after every use.
- Disconnect the equipment before any intervention.
- Avoid absolutely to unscrew any connection while the machine is under pressure.
- Check the damaged parts.
- Do not clean the plastic parts with solvent.
- In case of damage of the electric cable or the plug, do not run the machine and contact a licensed After-Sale Service to put genuine parts instead of the defective ones.
- In case of needed After-Sale Service, always specify the machine model and its serial number.
- For any replacement of parts, only use genuine parts.

## 3. WARNING (continued)

---

### 3.1. SAFETY (continued)



- Do not modify the machine.
- Do not cut or dismantle the protection grids.
- Do not open the electric box.

### WORKSPACE

- Maintain the workspace clean and clear.
- Ambient operating temperature must be from 5°C and 35°C.
- Do not use the equipment in a potentially explosive area.
- Do not place any potentially inflammable objects in close proximity to the machine.
- Take away every not qualified person from the working area of the machine, as well as children and animals.
- In case of installation of the machine on scaffolding or a plan above ground level, attach the machine to avoid any fall while operating.
- Do not install the equipment on an inclined surface to avoid the risks of unexpected moves or falls.

### HOSES

- Always use hoses and connections adapted to the used product (genuine parts), do not try to fix it.
- Do not walk on the hoses, do not bend them.
- Do not use the hoses to pull the machine.

### STORAGE

- Keep the equipment in a clean and clear area in which the temperature does not exceed +35°C.
- After every use, necessarily grease the pump with a mixture of water + storage liquid to avoid it blocking up. The storage of a not greased pump can damage it seriously.

**IN CASE OF NECESSITY, WE SAVE OURSELVES THE RIGHT TO MAKE ANY USEFUL MODIFICATION WITHOUT ADVANCED NOTICE.**

## 3. WARNING (continued)

---

### 3.2. ELECTRIC CONNECTION



The electric connection of the machine must be on a 16A - 230V plug with a differential circuit breaker.

Before any intervention on the machine, make sure that every energy supply is cut (air and electricity).

#### **GROUND CONNECTOR**

All the machines must be connected to the ground when they work to protect the operator from electric shocks. Our machines are all equipped with standardized connection plugs.

Electric connection must be made by a qualified technician. It is forbidden to modify or dismantle the machine, especially the electric box.

Repairs must be made by an authorized center or our After-sale Service.

During any intervention on the machine, make sure that the ground is well reconnected.

#### **EXTENSION CORDS**

During the use of an extension cord, make sure that it is not crushed or damaged and that it contains a ground. Check that the section of the used extension cord is sufficient to support the machine when it is working. A too thin extension cord can cause voltage drops or overheating of the machine.

In case of use of a cable reel, it is imperative to unwind it entirely, otherwise, the equipment can be damaged. The section must be proportional to the length of the cord.

### 3.3. END OF LIFE OF THE PRODUCT



At its end-of-life, the machine must not be eliminated with the other household waste. The uncontrolled elimination of waste can harm the environment or human health. Individuals are invited to contact the distributor which sold them the product or to inquire with their city hall to know where and how to get rid of the product so it can be recycled while respecting the environment.

Under the regulation of Waste of Electrical and Electronic Equipments (WEEE), we undertake to process the used EEEs according to the following provisions: applicable only to products on the market since 08/13/05, under the brands EUROPE PROJECTION or VOLUMAIR, products of other brands sold by our company (upon presentation of the corresponding invoices), products that operate using electrical energy (for example, thermal washers or compressors do not fall into this category).

#### **Treatment modality**

WEEE returns collected by our clients/distributors at their own expense to our collection points in Antony (92) or Rousset sur Arc (13). Upon receipt, the products are sorted by our employees and directed to the most appropriate processing channels.

For any further information, please contact our hotline to **conseil@euromair.com** or **04 42 29 08 96**.

## 4. YOUR MACHINE

### 4.1. DESCRIPTION

JETPRO 120 is a machine for applying thin films of filler.

It uses a valveless pump, is easy to maintain, with a round stainless steel tank for easy cleaning, a Ø35mm drain plug. It is equipped with large diameter, flat profile, inflatable tyres for better stability.

The JETPRO 120 can atomize various types of plaster : smoothing plaster, skimming plaster, droplet filler, etc.



Do not use products with grain size (unless with droplet kit up to 3mm of grain size), mortars, lime based renders, technical or special coatings with heavy loadings

### 4.2. TECHNICAL CHARACTERISTICS

Maximum working pressure	120 bar
Maximum product flow-rate	7 L/min
Electric motor	3 kW / 230 V / 50 & 60 Hz
Pump	volumetric screw
Tank capacity	4 bags
Maximum nozzle size (new)	0,055"
Dimensions (h x w x L)	128 x 65 x 89 cm
Weight	116 kg
Noise level	91 Lwa
Delivered with	<ul style="list-style-type: none"><li>- a Ø19 x 30 m hose</li><li>- a Ø16 x 2.5 m easy handling flexible hose</li><li>- a wireless remote control</li><li>- a 1L bottle of storage liquid</li><li>- a toolbox containing :<ul style="list-style-type: none"><li>• a spray-gun</li><li>• a TT3 443 nozzle</li><li>• a nozzle holder</li><li>• two cleaning balls</li><li>• a tube brush</li><li>• a 8mm Allen key</li></ul></li></ul>

## 4. YOUR MACHINE (continued)

### 4.3. IDENTIFICATION OF THE COMPONENTS OF THE MACHINE



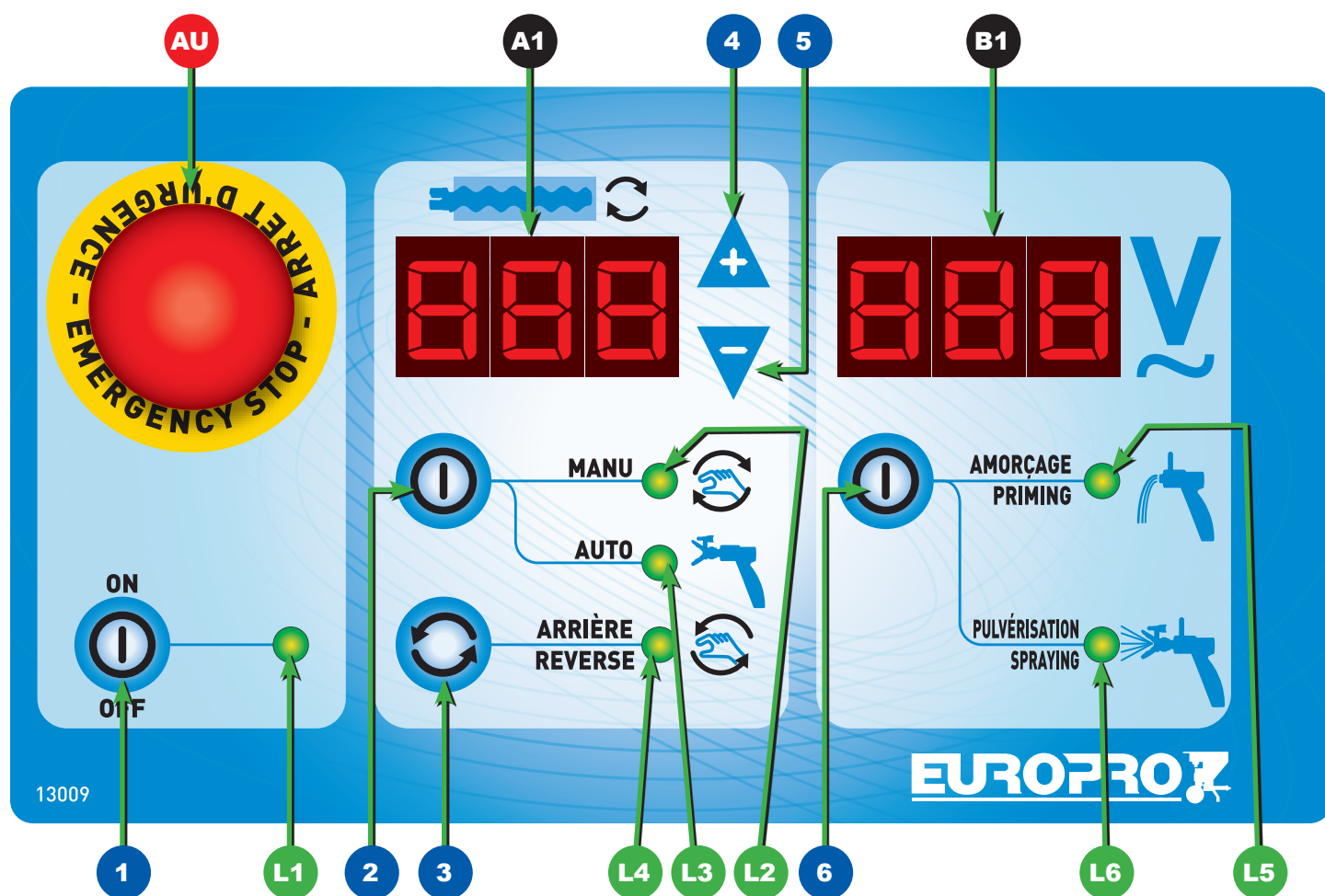
A	Toolbox
B	Manometer
C	Pump
D	Drain valve
E	Spray-gun
F	Nozzle
G	Control panel (see next page)

The complete list of the components of the machine is available on our website

**[www.euromair.com](http://www.euromair.com)**

## 4. YOUR MACHINE (continued)

### 4.3. IDENTIFICATION OF THE COMPONENTS OF THE MACHINE (continued)



**1** ON/OFF : Start / Stop

**2** MANU/AUTO : Choice of MANU or AUTO mode

**3** REVERSE : Runs the pump backwards only while you press

**4** + : increases the motor speed

**5** - : decreases the motor speed

**6** PRIMING / SPRAYING :

choice of PRIMING or SPRAYING mode

**AU** Emergency stop

**L1** Light Power on

**L2** Light Manual process is selected

**L3** Light Automatic process is selected

**L4** Light backwards running

**L5** Light pump is priming

**L6** Light pump is running under pressure

**A1** Shows upon: running speed of motor or pump pressure in %

**B1** Shows Network Voltage (do not run below 200V)

## 5. USE OF THE MACHINE

---

### 5.1. PREREQUISITES

- The electric connection has to be 230 V - 16 A - 50 or 60 Hz with a 3 x 2,5 mm cable reel of 40m maximum, completely unreeled.
- The selection of the working mode is done by pushing the button (6), the warning lights (L5) or (L6) indicate the selected working mode. The display (A1) indicates the set value of the instruction "PRIMING" or "SPRAYING".
- In PRIMING mode, the display (A1) indicates the setting of the speed of the rotation of the pump in %.
- In SPRAYING mode, the display (A1) indicates the setting of the working pressure in % (100% = 120 bars).
- In AUTO mode (warning light L3 is on), the starting up of the machine happens automatically in SPRAYING mode when opening the lance (warning light L6 is on).
- Always carry out the starting up of the machine in PRIMING mode.
- During the starting up of the machine, it is important to respect the following stages mentioned below :
  - turn the machine on
  - push the button (1)
  - set the display (A1) to 50 with help of the buttons +/- (4) & (5)
  - push the button (2) to verify the correct start-up
- After a prolonged standstill, it is possible that the pump might be blocked. If this is the case, proceed by start and stop. Put water and stocking liquid into the tank. Alternately turn the pump forwards and backwards for 5 second sequences. As soon as the engine starts to turn normally, the pump is unblocked. Empty the water.

### 5.2. STARTING UP

#### Work / Stop

- Once the machine is plugged in, the machine is in the stop mode, the display (A1) indicates "OFF" and the display (B1) indicates the mains voltage.
- If "AU" is shown, unscrew the emergency stop button a quarter of a turn.
- One push of the button "ON/OFF" (1), the warning light (L1) lights up, the machine is ready to work.
- One push of the button "ON/OFF" (1), when the machine is ready to work (warning light (L1) is on), the machine will switch off, the display (A1) indicates "OFF" (warning light (L1) is off)



## 5. USE OF THE MACHINE (continued)

### Start-up

1. Put soapy water into the tank.
2. Plug in the machine.
3. Disconnect the electric connector which is at the spray-gun (plug beneath the electric box)
4. Open the spray-gun.
5. Set the product flow-rate on the display (A1) to 30 with help of the buttons +/- (4) or (5).
6. Push the button MANU/AUTO (2) the warning light (L2) lights up. The drive shaft at the bottom of the tank must turn. If this is not the case, see 5.1. on page 12.
7. Push once again on the button MANU/AUTO (2) to switch to AUTO mode, the warning light (L3) lights up.
8. Put your product in the tank.
9. Switch the machine to MANU mode until the product comes out of the spray-gun.
10. As soon as the product comes out of the spray-gun, switch to AUTO mode.
11. Close the spray-gun, reconnect the electric connector
12. Put the nozzle-carrier onto the spray-gun and use the desired nozzle for the used product.
13. Set the working pressure on the display (A1) to 60 with help of the buttons +/- (4) or (5).
14. Open the spray-gun and verify that the warning light (L6) lights up, then start to atomize.
15. Adjust the pressure to your needs.

### 5.3. ERROR CODES

The different error codes show up on the display (A1).

<b>CODES</b>	<b>DEFINITION</b>	<b>TO DO</b>
	No display.	Plug the machine into the power supply, assure the power supply is 230 V, verify the fuse in the electric box.
<b>AU</b>	Emergency stop is on.	Unlock the emergency stop button (AU).
<b>OFF</b>	Machine is in the stop mode.	Switch the machine on by pressing on the button (1).
<b>MOT</b>	Default control engine.	Set the machine to "OFF" for one minute and then switch it back on.
<b>TEL</b>	Default command departure.	Verify that the lance is closed when the machine is switched on.

If the problem persists or if in doubt about the correct working of the machine, do not try to repair the machine yourself or to dismantle it.

Contact an authorized After-Sale Service or our hotline on : **+33(0)4 42 29 08 96**.

## 6. MAINTENANCE



**Disconnect the plug of the machine from the mains voltage before any intervention.**



**Before unscrewing the hose, make sure it is not under pressure anymore.**

### 6.1. CLEANING PROCEDURE

1. Open the bottom drain valve.
2. Empty the tank.
3. Clean with water.
4. Unscrew the connector on the side of the pump and on the lance.
5. Proceed to cleaning the pump as shown on the photos here after (page 15 to 18).
6. After having cleaned the pump and remounted it, put the cleaning ball into to the pump outlet and then screw back the hose.
7. Fill the tank with water.
8. Push the button "MANU/AUTO" to put the machine in MANU mode, the warning light (L2) lights up.
9. Set the display (A1) to 50 with help of the buttons +/- (4) & (5).
10. Wait until the cleaning ball comes out of the hose (carry out operations 6 to 10 twice).
11. Clean the lance.
12. Screw the hose back onto the lance.
13. Put stocking liquid into the tank according to the recommended dilution on the product bottle.
14. Push the button "MANU/AUTO" (2) to switch to the MANU mode, the warning light (L2) lights up and make the pump turn for about 15 seconds.
15. Electrically disconnect the Jetpro.

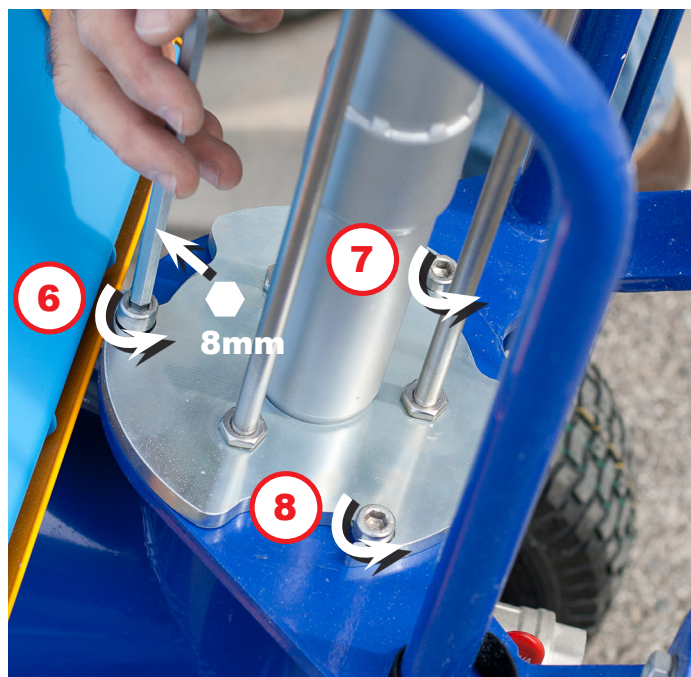
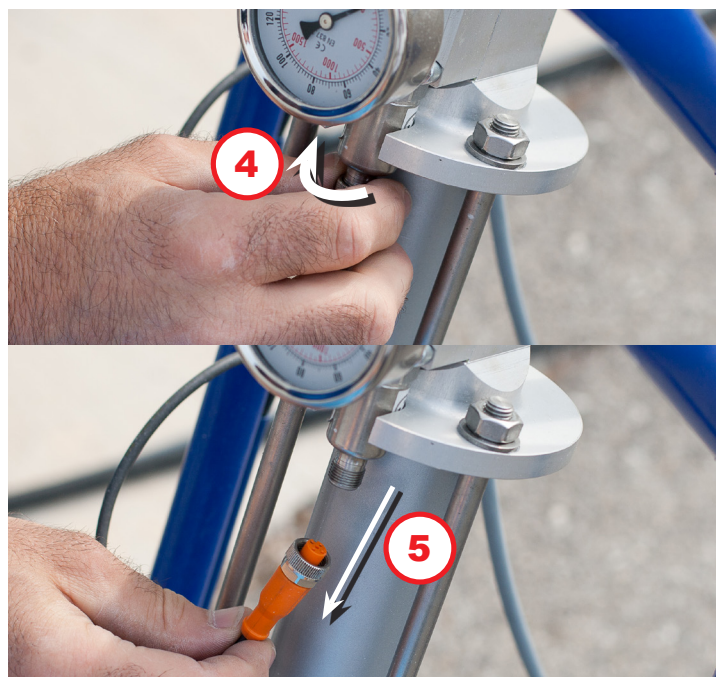
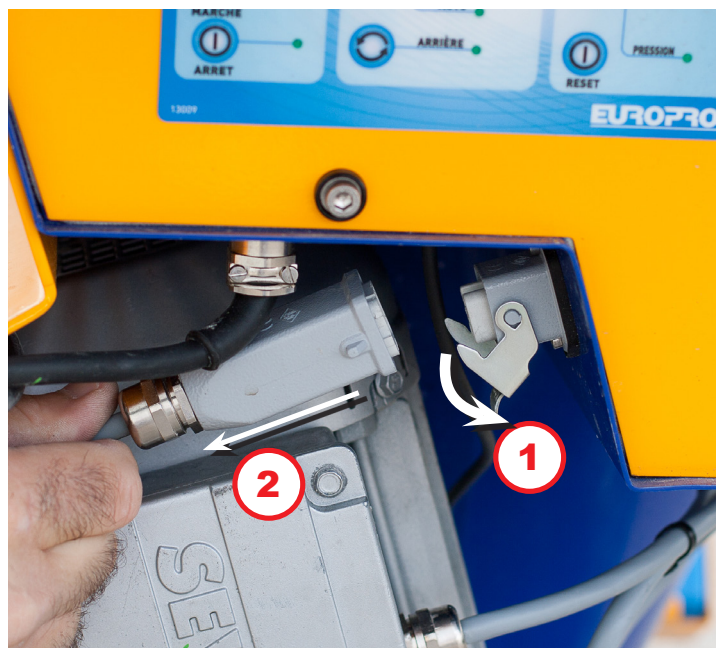


**The direct projection of water under pressure onto the control panel has to be stopped at the risk of water infiltration into the electric box. Proceed by simply cleaning with a humid sponge.**



## 6. MAINTENANCE (continued)

### 6.2. DISMANTLING





## 6. MAINTENANCE (continued)

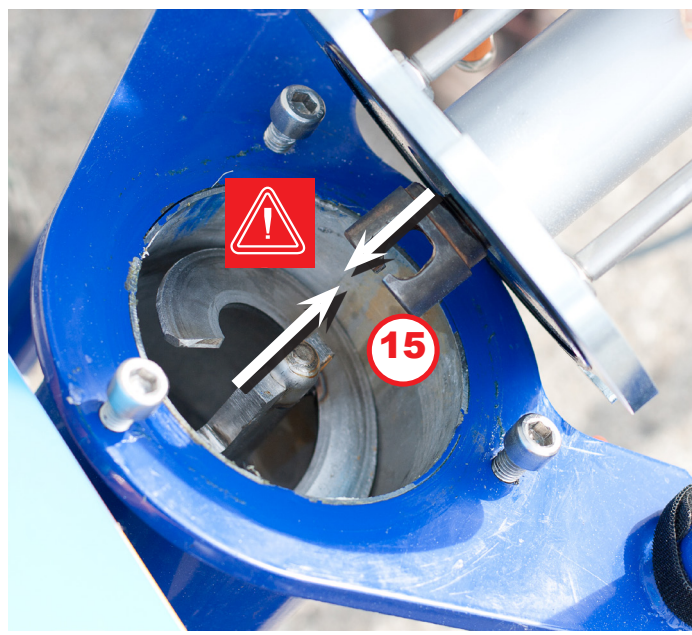
### 6.2. DISMANTLING (continued)





## 6. MAINTENANCE (continued)

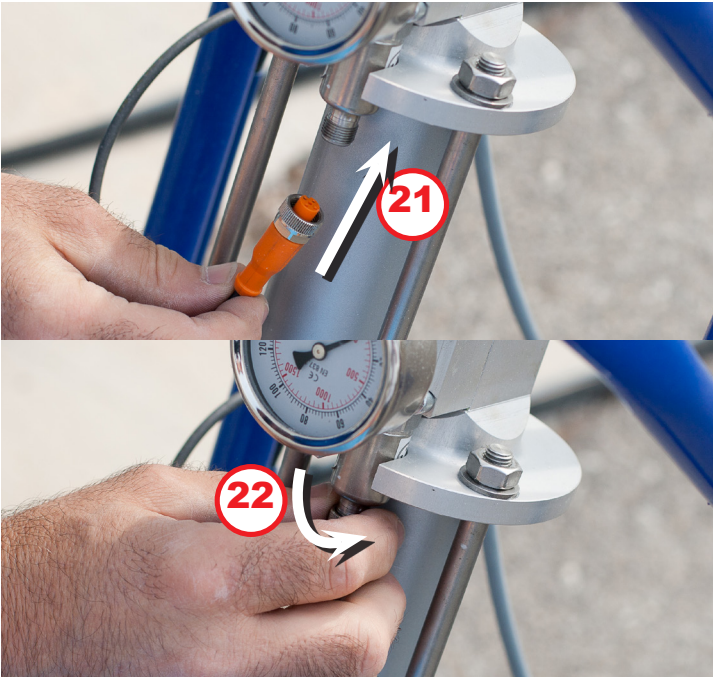
### 6.3. REASSEMBLY





# 6. MAINTENANCE (continued)

## 6.3. REASSEMBLY (continued)



## 7. FAILURES AND REMEDIES

Failure	Remedy
The display does not light up (no display).	<ul style="list-style-type: none"><li>• Verify the power supply.</li></ul>
The display indicates an error code.	<ul style="list-style-type: none"><li>• <b>See table page 13.</b></li></ul>
The pump is blocked.	<ul style="list-style-type: none"><li>• After a prolonged standstill, the pump might be blocked. <b>See procedure 5.1. page 12.</b></li></ul>
The machine does not start at the opening of the lance.	<ul style="list-style-type: none"><li>• Verify that the connectors are well connected.</li></ul>
The pressure is insufficient.	<ul style="list-style-type: none"><li>• Verify that the setting is strong enough.</li><li>• Verify that the nozzle is not too big or too worn out.</li><li>• Verify the wear of the pump.</li></ul>



In case of an unknown defect or a doubt on the good running of the machine, do not try to repair it by yourself or to dismantle it.

Contact an authorized After-Sale Service or our hotline : **+33(0) 4 42 29 08 96.**

## 8. MACHINE DECLARATION OF CONFORMITY

---

**THE MANUFACTURER :** EUROPE PROJECTION  
Z.I Rousset Parc Club  
343 bd Francis Perrin  
13106 ROUSSET CEDEX

**DECLARES THAT THE EQUIPMENT DESIGNATED BELOW :**

Trademark : EUROPE PROJECTION

Type : Atomizer

Model : JETPRO 120

**COMPLIES WITH THE ARTICLE:**

- the R.233-73 article of the Labour Code

**THE DIRECTIVES :**

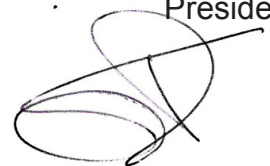
- Machines 2006/42/CE
- Low voltage 2014/35/UE
- CEM 2014/30/UE
- ROHS 2011/65/UE

**AND WITH THE STANDARDS:**

- NF EN ISO 12100
- NF EN 60204-1
- NF EN ISO 13857
- NF EN 1953

ROUSSET, FEBRUARY 16th 2017

Patrick BOREL  
President



Distributed by : EUROMAIR DISTRIBUTION  
Z .I. Rousset Parc Club, 343 boulevard Francis Perrin - 13106 Rousset sur Arc Cedex  
Tél : 00 33 (0)4 42 29 08 96 – Fax : 00 33 (0)4 42 53 44 36  
SAS au capital de 40 000€ - SIREN 444 797 310 000 – NAF 4673 B



## 9. SPRAY-GUN DECLARATION OF CONFORMITY

---

**THE MANUFACTURER :** EUROPE PROJECTION  
Z.I Rousset Parc Club  
343 bd Francis Perrin  
13106 ROUSSET CEDEX

**DECLARES THAT THE EQUIPMENT DESIGNATED BELOW:**

Trademark: EUROPE PROJECTION

Model: JETPRO spray-gun

Working pressure: 19 MPa

**COMPLIES WITH THE ARTICLE:**

- the R.233-73 article of the Labour Code

**THE DIRECTIVE:**

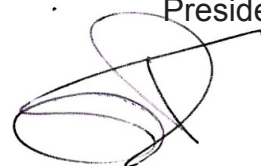
- Machines 2006/42/CE

**AND WITH THE STANDARD:**

- NF EN 1953

ROUSSET, FEBRUARY 16th 2017

Patrick BOREL  
President



Distributed by : EUROMAIR DISTRIBUTION  
Z .I. Rousset Parc Club, 343 boulevard Francis Perrin - 13106 Rousset sur Arc Cedex  
Tél : 00 33 (0)4 42 29 08 96 – Fax : 00 33 (0)4 42 53 44 36  
SAS au capital de 40 000€ - SIREN 444 797 310 000 – NAF 4673 B

# 10. WARRANTY

---

## 10.1. WARRANTY CONDITIONS

- The manufacturer guarantees the products in case of a defect in design or manufacture for a period of 12 months from the date of invoice.
- The wearing parts are excluded from the warranty.
- Any warranty intervention must be exclusively performed by the manufacturer or an authorized After-Sale Services.
- The shipping of any product to the manufacturer, for whatever the type of warranty service, is subject to its acceptance.
- The warranty covers the free of charge repair or the replacement of the defective components identified by our technicians.
- The warranty is void in case of damages caused by an accident, resulting from negligence, an incorrect use or installation, improper or not in accordance with the warnings contained in the user manual.
- The warranty is also void in case of modification or repairs performed by unauthorized staff.
- The warranty excludes any type of compensation in case of damage to persons or problems caused by incorrect or inappropriate use.
- This warranty will be applied only to buyers who have complied with the contractual and administrative standards and will be able to present a specific documentation mentioning the date of purchase.
- This is the only valid warranty recognized by the manufacturer. No one is allowed to deliver another one, oral or written, or modify its terms.



All our terms of sales and shipping are available on our **general catalogue of the ongoing year** and also on our website **[www.euromair.com](http://www.euromair.com)**.

## 10. WARRANTY (continued)

### 10.2. CERTIFICATE OF WARRANTY

**IT IS COMPULSARY TO RETURN THIS DOCUMENT DULY COMPLETED  
BY E-MAIL : [contact@euromair.com](mailto:contact@euromair.com) OR BY FAX : +33(0)4 42 53 44 36**

#### **IMPERATIVE**

The manual must be provided to the user of the equipment.

It must be read before starting up the machine.

For any intervention under warranty, the purchase invoice must be presented.

#### **WARRANTY**

Each product is delivered inspected and tested.

Moreover, it is guaranteed for 12 months from the date of purchase.

This guarantee only applies if the buyer respects the safety regulations, contractual and administrative standards and if the use was in conformity with the instructions present in the user manual.

Based on this warranty, the manufacturer will repair or replace free of charge any part that can deteriorate itself or be defective during this period.

The "final judgment" rests solely with our After-Sale Service technicians.

The guarantee does not cover parts which, because of their specific use, are subject to wear and tear.

If the identified defects could not be attributed to our liability, costs will be charged to the buyer.

**MODEL :** JETPRO 120 atomizer

**SERIAL NUMBER :**

**DELIVERY NUMBER :**

Rousset, dated

Signature of the dealer

Signature of the final user

Stamp of the final user

Distributed by : EUROMAIR DISTRIBUTION

Z .I. Rousset Parc Club, 343 boulevard Francis Perrin - 13106 Rousset sur Arc Cedex

Tél : 00 33 (0)4 42 29 08 96 – Fax : 00 33 (0)4 42 53 44 36

SAS au capital de 40 000€ - SIREN 444 797 310 000 – NAF 4673 B

